



Customer: Akira Botanicals
Customer Sample ID: Delta 8 Infused Gummy
Laboratory Number: 20J0431-01
Servings per Container: 2.8486



Cannabinoid Profile

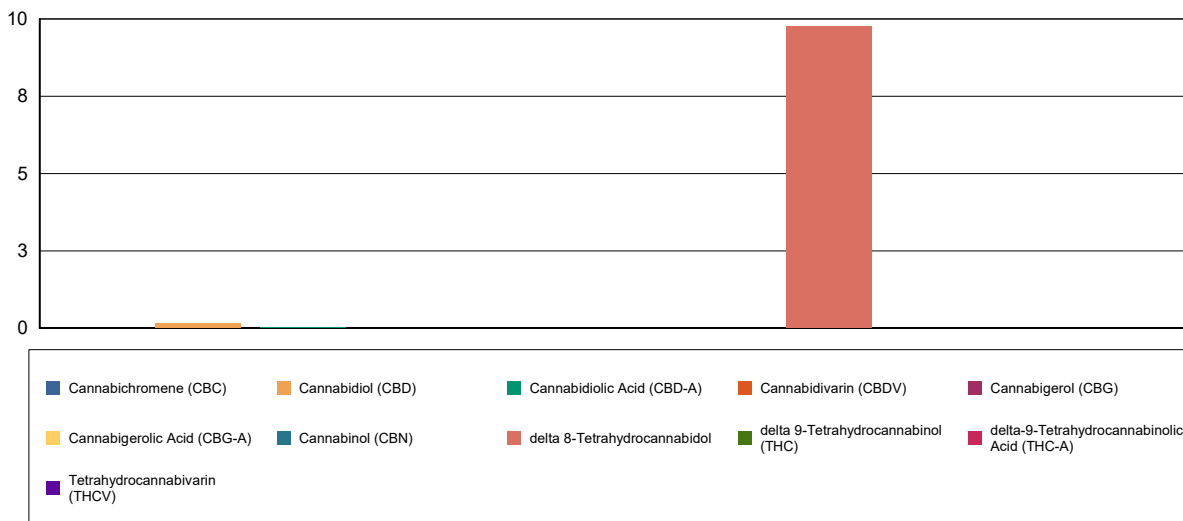
Extraction Technician: DF
Analytical Chemist: CB

Extraction Date(s)	Analysis Date(s)
10/21/2020	10/22/2020

Cannabinoids (HPLC)		Results		
	LOD (mg/g)	%	mg/g	mg/gummy
Cannabidivarin (CBDV)	<0.007			
Cannabidiolic Acid (CBD-A)		0.001	0.012	0.035
Cannabigerolic Acid (CBG-A)	<0.007			
Cannabigerol (CBG)	<0.007			
Cannabidiol (CBD)		0.01	0.149	0.424
Tetrahydrocannabivarin (THCV)	<0.007			
Cannabinol (CBN)	<0.007			
delta 9-Tetrahydrocannabinol (THC)	<0.007			
delta 8-Tetrahydrocannabinol		0.98	9.77	27.8
Cannabichromene (CBC)	<0.007			
delta-9-Tetrahydrocannabinolic Acid (THC-A)	<0.007			
Cannabinoids Total		%	mg/g	
Max Active THC		0.00	0.00	
Max Active CBD		0.01	0.16	
T.Active Cannabinoids		0.01	0.15	
Total Cannabinoids		0.99	9.93	

Following USDA guidelines on uncertainty, Altitude Consulting's uncertainty are calculated for CBDa and CBD at +/- 4%. The uncertainty for THCa and THC are +/- 5%. This implies the range for a 10% value of CBD to be 9.6-10.4%. The uncertainty range for a 0.30% value of THC would be 0.28-0.32%. The measurement uncertainty is calculated using a coverage factor of 2.

Cannabinoid (mg/g)



Reporting Limits will vary based on sample extraction weight used for the analysis.

Altitude Consulting, LLC utilizes NIST traceable Reference Standards and Certified Reference Material to calibrate analytical instruments along with proven analytical methods. The methods are applied in the most ethical manner following good laboratory practice guidelines. The results of this report are based solely on the sample submitted and cannot be reproduced.